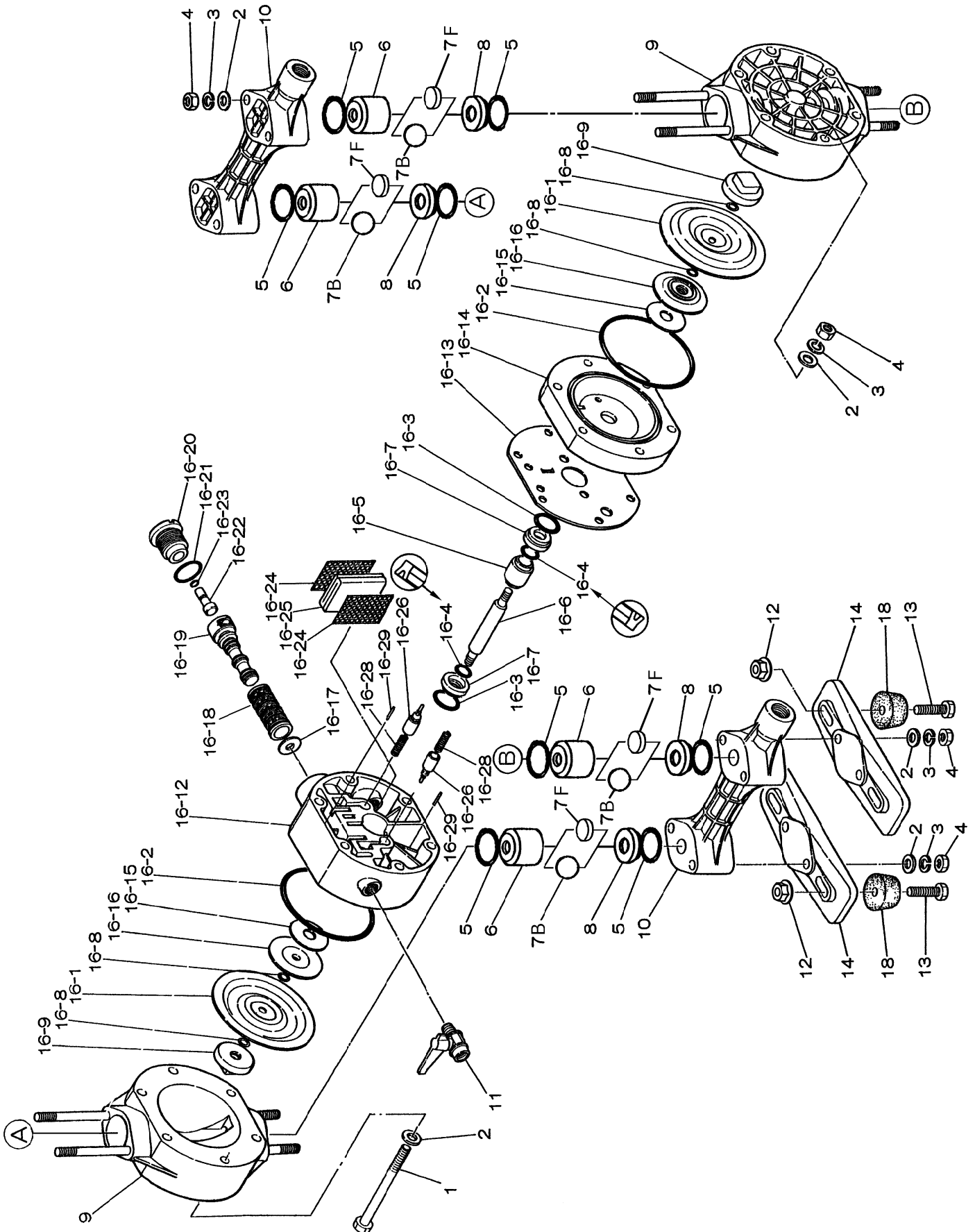




Fluid contact Portion : Polypropylene type
Polyvinylidene fluoride type





REF. No.	MODEL		NDP-15 FVT	NDP-15 FVS
	ITEM No.		852141	854680
	DESCRIPTION	QTY	Part No.	Part No.
1	BOLT	6	684310	684310
2	PLAIN WASHER	20	631329	631329
3	SPRING WASHER	14	681300	681300
4	NUT	14	628012	628012
5	O RING	8	643027	643027
6	VALVE GUIDE	4	771632	771632
7F	FLAT VALVE	4	771762	771762
8	VALVE SEAT	4	771633	771633
9	OUT CHAMBER	2	780120	780120
10	MANIFOLD	2	780055	780055
11	VALVE	1	686825	686825
12	FLANGED NUT	4	682276	682276
13	BOLT	4	611152	611152
14	BASE	2	771635	771635
16	BODY ASSY	1	803003	803565
16- 1	DIAPHRAGM	2	770933	771972
16- 2	O RING	2	640144	640144
16- 3	O RING	2	640020	640020
16- 4	PACKING	2	684284	684284
16- 5	GUIDE	1	771337	771337
16- 6	CENTER ROD	1	710578	710578
16- 7	BUSHING	2	771336	771336
16- 8	O RING	4	643005	—
16- 9	CENTER DISK	2	771631	771631
16-12	BODY A	1	780028	780028
16-13	GASKET	1	771347	771347
16-14	BODY B	1	780030	780030
16-15	CUSHION	2	771342	771342
16-16	CENTER DISK	2	771344	771344
16-17	CUSHION	1	771483	771483
16-18	SLEEVE ASSY	1	804249	804249
16-19	C SPOOL ASSY	1	802835	802835
16-20	CAP	1	771695	771695
16-21	O RING	1	640022	640022
16-22	RESET BUTTON	1	771350	771350
16-23	O RING	1	640002	640002
16-24	MESH	2	771589	771589
16-25	MUFFLER FELT	1	771465	771465
16-26	PILOT VALVE ASSY	2	832141	832141
16-28	SPRING	2	710577	710577
16-29	SPRING PIN	2	632752	632752
18	RUBBER FOOT	4	770551	770551