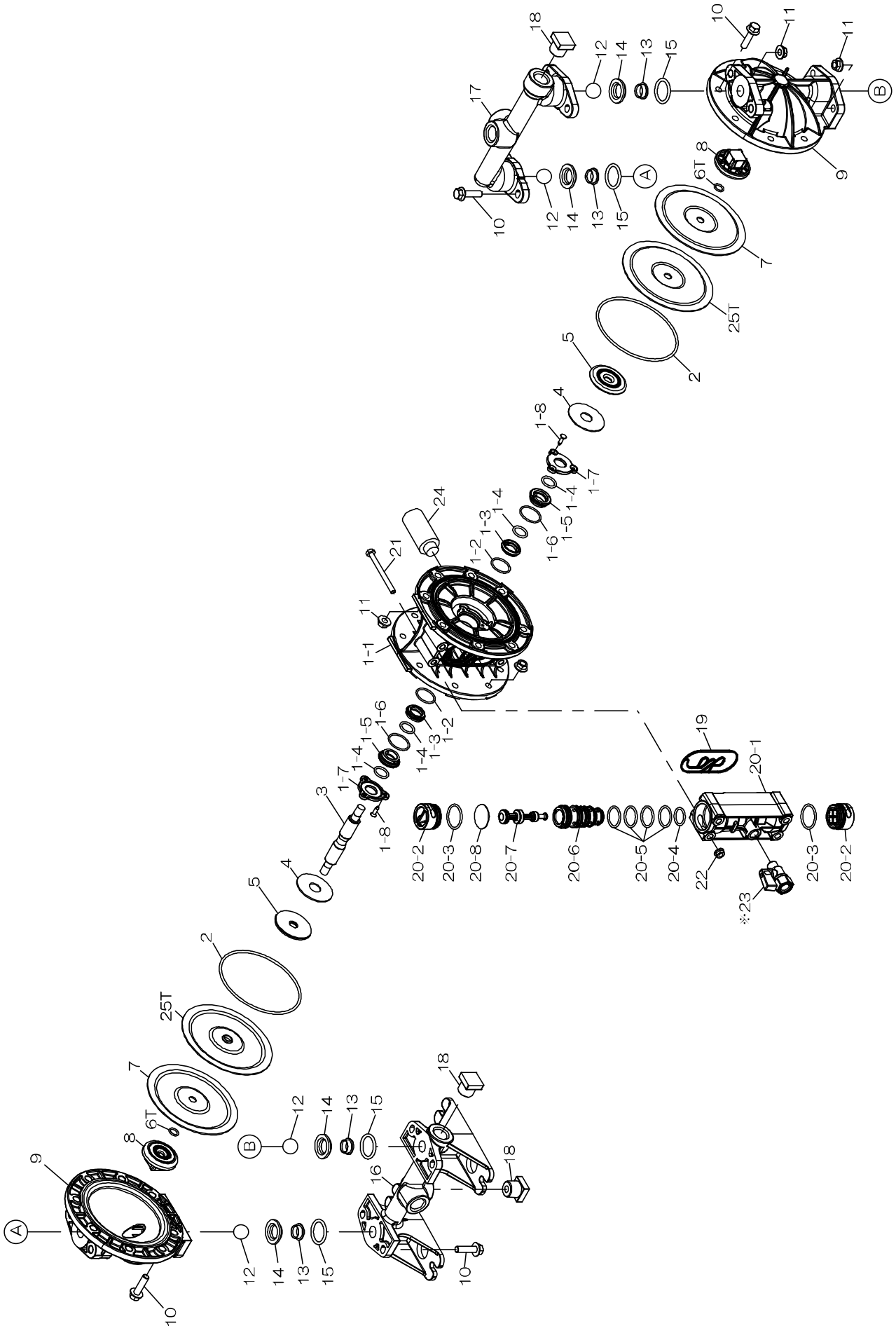




Fluid contact Portion : Polypropylene type
Polyvinylidene fluoride type



※No.23 There is no air valve in NPT Type



Series :G15P

REF. No.	MODEL		G15 PN00	G15 PT00	G15 PH00	G15 PS00
	ITEM No.		854980	854914	854978	854915
	DESCRIPTION	QTY.	Part No.	Part No.	Part No.	Part No.
1	BODY ASSY	1	805207	805207	805207	805207
1- 1	CENTER BODY	1	773380	773380	773380	773380
1- 2	O RING	2	686893	686893	686893	686893
1- 3	GUIDE BUSHING A	2	773385	773385	773385	773385
1- 4	O RING	4	640015	640015	640015	640015
1- 5	GUIDE BUSHING B	2	780301	780301	780301	780301
1- 6	O RING	2	684900	684900	684900	684900
1- 7	GUIDE BUSHING STOPPER	2	773384	773384	773384	773384
1- 8	TAPPING SCREW	6	686894	686894	686894	686894
2	O RING	2	640147	640147	640147	640147
3	CENTER ROD	1	717100	717100	717100	717100
4	CUSHION	2	773278	773278	773278	773278
5	CENTER DISK	2	716923	716923	716923	716923
6T	O RING	2	—	643007	—	—
7	DIAPHRAGM	2	773277	773276	773316	773315
8	CENTER DISK	2	773391	773391	773391	773391
9	OUT CHAMBER	2	780303	780303	780303	780303
10	FLANGED BOLT	24	686892	686892	686892	686892
11	FLANGED NUT	24	686032	686032	686032	686032
12	BALL	4	773422	773423	773374	773424
13	VALVE SEAT B	4	773430	773430	773430	773430
14	VALVE SEAT A	4	773429	773429	773429	773429
15	O RING	4	640025	643025	640025	684114
16	MANIFOLD B	1	780306	780306	780306	780306
17	MANIFOLD A	1	773394	773394	773394	773394
18	PLUG	3	773392	773392	773392	773392
19	GASKET	1	773407	773407	773407	773407
20	VALVE BODY ASSY	1	805209	805209	805209	805209
20- 1	VALVE BODY	1	833227	833227	833227	833227
20- 2	CAP	2	773383	773383	773383	773383
20- 3	O RING	2	683112	683112	683112	683112
20- 4	O RING	1	685453	685453	685453	685453
20- 5	O RING	4	685276	685276	685276	685276
20- 6	SLEEVE	1	780302	780302	780302	780302
20- 7	SPOOL ASSY	1	805208	805208	805208	805208
20- 8	CUSHION	1	773428	773428	773428	773428
21	BOLT	4	621115	621115	621115	621115
22	FLANGED NUT	4	684086	684086	684086	684086
23	VALVE	1	686825	686825	686825	686825
24	MUFFLER	1	686757	686757	686757	686757
25T	BACK UP DIAPHRAGM	2	—	773447	—	—