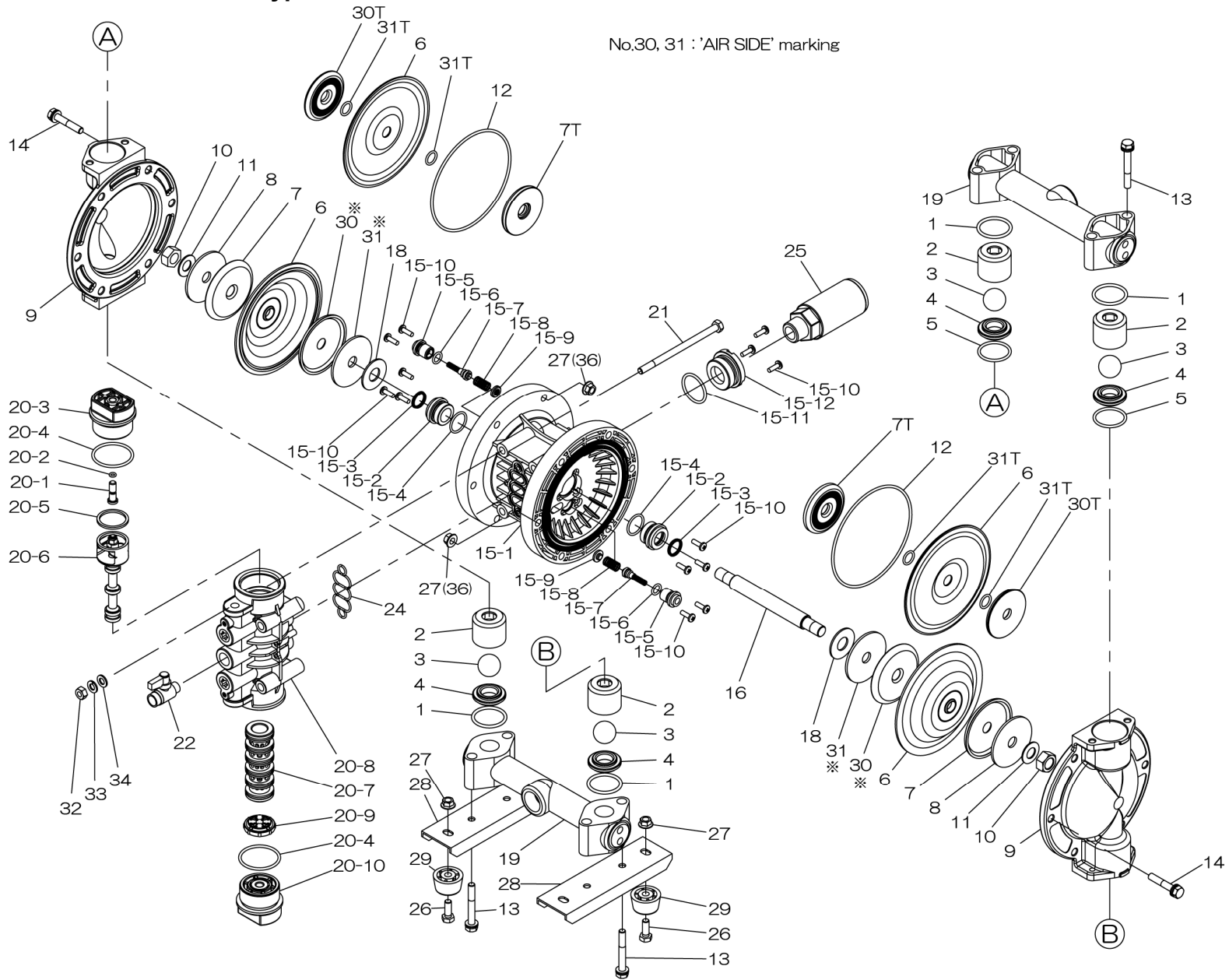


**Fluid contact Portion : Aluminum type**  
**Stainless-steel type**



No.30, 31 : 'AIR SIDE' marking

Number in parenthesis indicates the quantity for 25type



REF. No.	MODEL		BODY ASSY P20
	ITEM No.		804603
	DESCRIPTION	Q'TY.	Part No.
15- 1	BODY	1	772928
15- 2	THROAT BEARING	2	772931
15- 3	PACKING	2	685414
15- 4	O RING	2	685276
15- 5	VALVE SEAT	2	772932
15- 6	O RING	2	640009
15- 7	PILOT VALVE ASSY	2	802360
15- 8	SPRING	2	708666
15- 9	SPRING SEAT	2	772948
15-10	TAPPING SCREW	13	686030
15-11	O RING	1	640132
15-12	BUSHING	1	772933

REF. No.	MODEL		VALVE BODY P20_P25
	ITEM No.		804607
	DESCRIPTION	Q'TY.	Part No.
20- 1	RESET BUTTON	1	772991
20- 2	O RING	1	640002
20- 3	CAP A	1	772946
20- 4	O RING	2	640043
20- 5	PACKING	1	771241
20- 6	C SPOOL ASSY	1	802400
20- 7	SLEEVE ASSY	1	804609
20- 8	VALVE BODY ASSY	1	832902
20- 9	CUSHION	1	771914
20-10	CAP B	1	772947