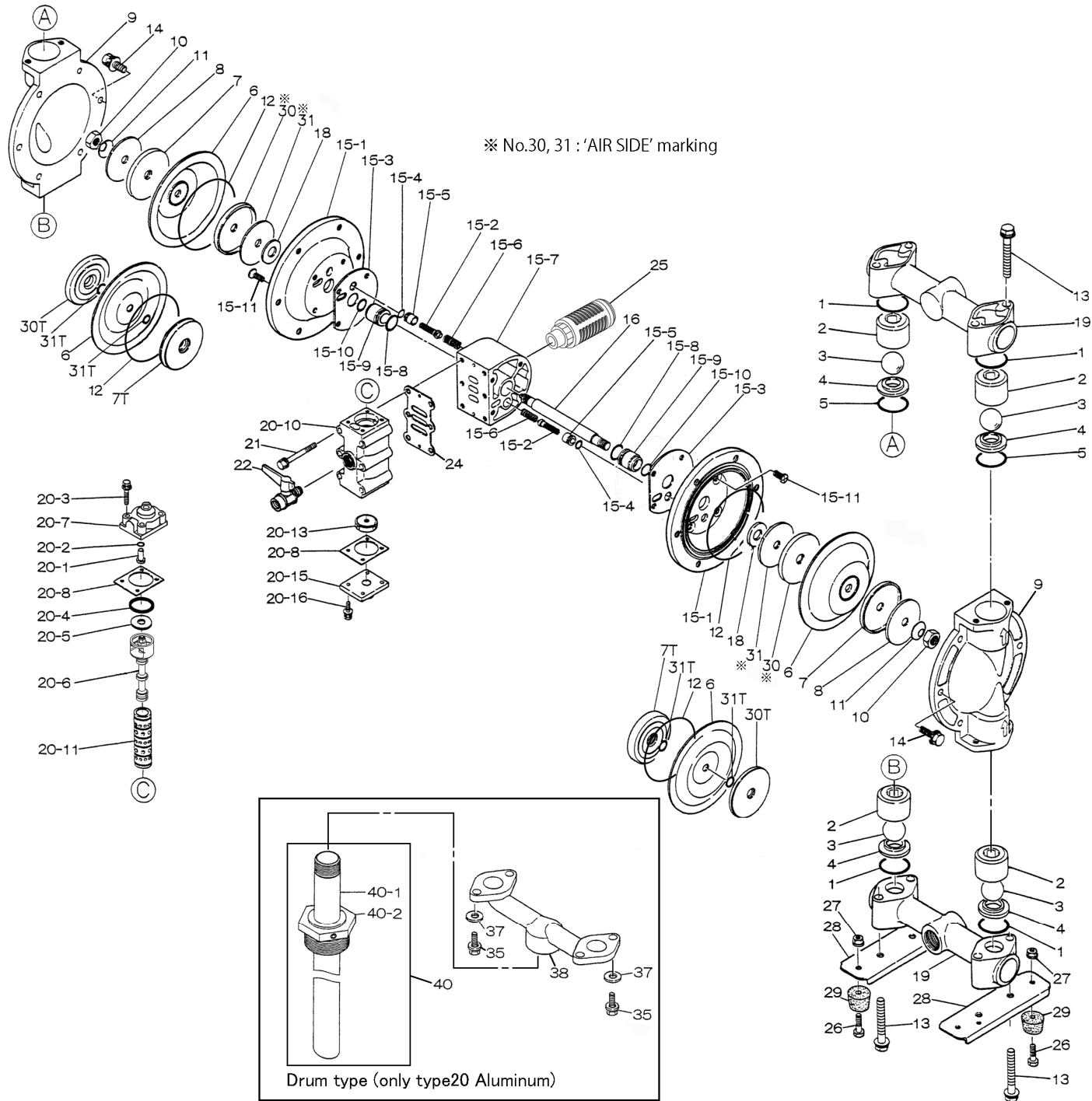


**Fluid contact Portion :**  
**Aluminum type**  
**Stainless-steel type**  
**Forged iron type**





Series :NDP-25BF

REF. No.	MODEL		NDP-25 BFC	NDP-25 BFN	NDP-25 BFE	NDP-25 BFV	NDP-25 BFT	NDP-25 BFH	NDP-25 BFS	NDP-25 BFH/T
	ITEM No.		855039	855040	855041	855042	855043	855044	855045	853480
	DESCRIPTION	QTY	Part No.	Part No.	Part No.	Part No.	Part No.	Part No.	Part No.	Part No.
1	O RING	4	640044	640044	683997	642044	643044	640044	683997	643044
2	BALL GUIDE	4	711703	711703	711703	711703	711703	711703	711703	711703
3	BALL	4	770556	770581	770590	770599	770691	773127	773171	770691
4	VALVE SEAT	4	590087	590087	590087	590087	590087	590087	590087	590087
5	O RING	2	640134	640134	683996	642134	771130	640134	683996	771130
6	DIAPHRAGM	2	772961	772962	772963	772964	771110	771363	771974	771363
7,7T	CENTER DISK	2	709151	709151	709151	709151	709459	709151	709151	709151
8	WASHER	2	709150	709150	709150	709150	—	709150	709150	709150
9	OUT CHAMBER	2	711695	711695	711695	711695	711695	711695	711695	711695
10	NUT	2	682263	682263	682263	682263	682263	682263	682263	682263
11	CONED DISC SPRING	2	682730	682730	682730	682730	682730	682730	682730	682730
12	O RING	2	—	—	—	—	640154	640154	640154	640154
13	BOLT & WASHER	8	686364	686364	686364	686364	686364	686364	686364	686364
14	BOLT & WASHER	12	686361	686361	686361	686361	686361	686361	686361	686361
15	BODY ASSY	1	804664	804664	804664	804664	804664	804664	804664	804664
16	CENTER ROD	1	709162	709162	709162	709162	709162	709162	709162	709162
18	CUSHION	2	771054	771054	771054	771054	771054	771054	771054	771054
19	MANIFOLD ASSY	2	831249	831249	831249	831249	831249	831249	831249	831249
20	VALVE BODY ASSY	1	802361	802361	802361	802361	802361	802361	802361	802361
21	BOLT & WASHER	6	682265	682265	682265	682265	682265	682265	682265	682265
22	VALVE	1	686969	686969	686969	686969	686969	686969	686969	686969
24	GASKET	1	771056	771056	771056	771056	771056	771056	771056	771056
25	MUFFLER	1	680913	680913	680913	680913	680913	680913	680913	680913
26	BOLT	4	611148	611148	611148	611148	611148	611148	611148	611148
27	FLANGED NUT	4	682276	682276	682276	682276	682276	682276	682276	682276
28	BASE	2	709156	709156	709156	709156	709156	709156	709156	709156
29	RUBBER FOOT	4	770551	770551	770551	770551	770551	770551	770551	770551
30,30T	CENTER DISK	2	716258	716258	716258	716258	709331	716258	716258	716258
31	WASHER	2	716259	716259	716259	716259	—	716259	716259	716259
31T	O RING	4	—	—	—	—	643013	—	—	—

Series :NDP-25\_BODY\_VALVE

REF. No.	MODEL		BODY ASSY	BODY ASSY
	ITEM No.		BA BS BF	BP BV
	DESCRIPTION	QTY	Part No.	Part No.
15- 1	AIR CHAMBER	2	715939	715940
15- 2	PILOT VALVE ASSY	2	802360	802360
15- 3	GASKET	2	771057	771057
15- 4	O RING	2	640009	640009
15- 5	VALVE SEAT	2	771945	771945
15- 6	SPRING	2	708666	708666
15- 7	BODY	1	709154	711217
15- 8	O RING	2	685276	685276
15- 9	THROAT BEARING	2	772703	772703
15-10	PACKING	2	685414	685414
15-11	BOLT	8	682486	682486

REF. No.	MODEL		VALVE BODY	VALVE BODY
	ITEM No.		BA BS BF	BP BV
	DESCRIPTION	QTY	Part No.	Part No.
20- 1	RESET BUTTON	1	709161	709161
20- 2	O RING	1	640005	640005
20- 3	BOLT & WASHER	4	682704	682704
20- 4	PACKING	1	771241	771241
20- 5	WASHER	1	715961	715961
20- 6	C SPOOL ASSY	1	802400	802400
20- 7	CAP	1	710221	711219
20- 8	GASKET	2	771240	771240
20-10	VALVE BODY	1	711638	711641
20-11	SLEEVE ASSY	1	803931	803931
20-13	CUSHION	1	771914	771914
20-15	CAP	1	709305	711212
20-16	BOLT & WASHER	4	682262	682262