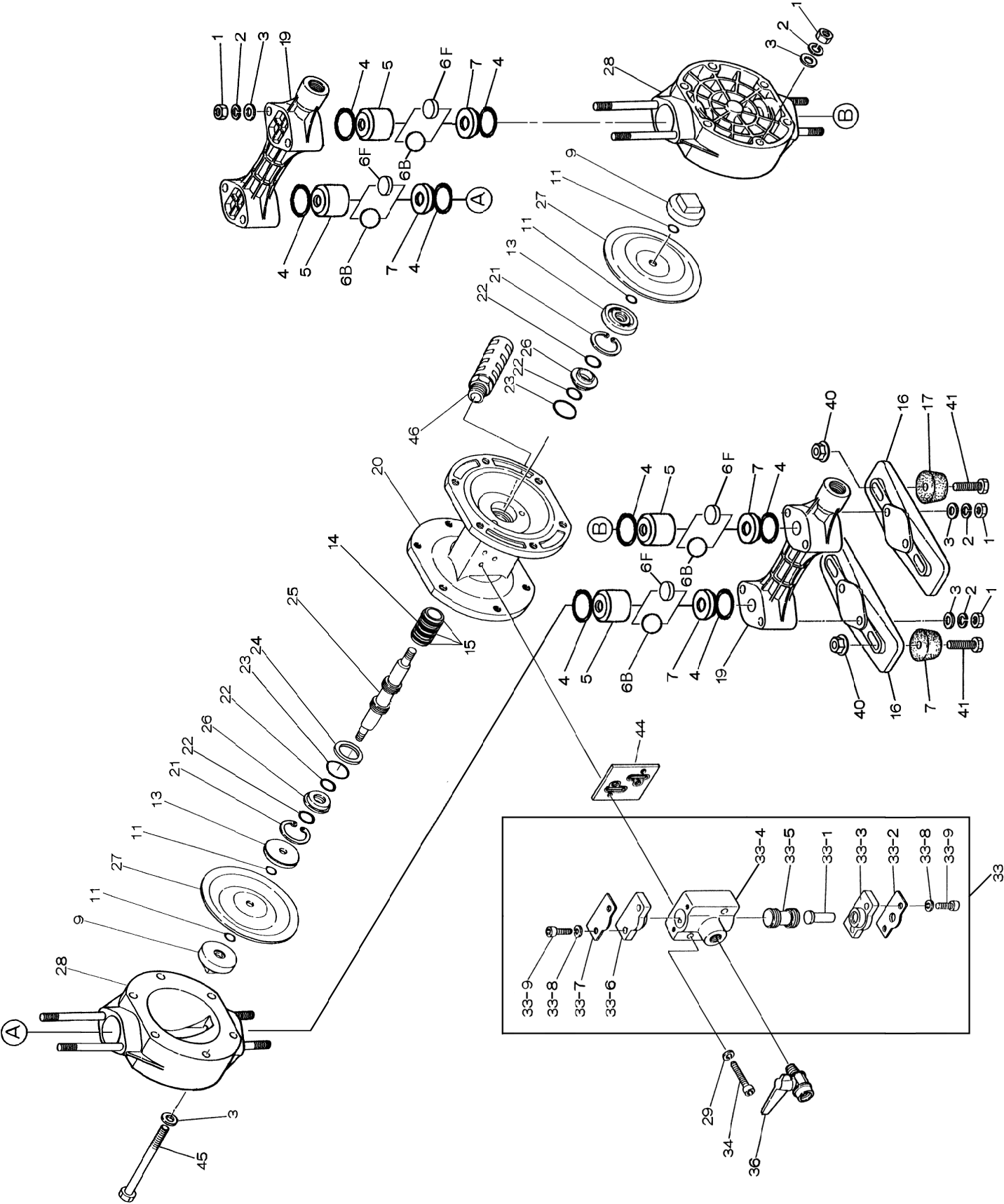




Fluid contact Portion : Polypropylene type
Polyvinylidene fluoride type





Series :DP-15BP

REF. No.	MODEL		DP-15 BPN	DP-15 BPE	DP-15 BPT	DP-15 BPH	DP-15 BPS
	ITEM No.		854685	YE ORIG.	854586	854687	854688
	DESCRIPTION	Q'TY	Part No.	Part No.	Part No.	Part No.	Part No.
1	NUT	8	628012	628012	628012	628012	628012
2	SPRING WASHER	20	681300	681300	681300	681300	681300
3	PLAIN WASHER	20	631329	631329	631329	631329	631329
4	O RING	8	640027	684115	643027	640027	684115
5	BALL GUIDE	4	771806	771806	771806	771806	771806
6B	BALL	4	771525	771979	771524	773125	773169
7	VALVE SEAT	4	780162	780162	780162	780162	780162
9	CENTER DISK	2	770968	770968	770968	770968	770968
11	O RING	4	640005	643005	643005	—	—
13	CENTER DISK	2	708770	708770	708770	708770	708770
14	SLEEVE	1	714678	714678	714678	714678	714678
15	O RING	4	684900	684900	684900	684900	684900
16	BASE	2	771352	771352	771352	771352	771352
17	RUBBER FOOT	4	770551	770551	770551	770551	770551
19	MANIFOLD	2	780271	780271	780271	780271	780271
20	BODY	1	715106	715106	715106	715106	715106
21	RETAINING RING	2	630807	630807	630807	630807	630807
22	PACKING	4	684284	684284	684284	684284	684284
23	O RING	2	640131	640131	640131	640131	640131
24	SPACER	1	772651	772651	772651	772651	772651
25	CENTER ROD ASSY	1	801785	801785	801785	801785	801785
26	GUIDE BUSHING	2	772619	772619	772619	772619	772619
27	DIAPHRAGM	2	770973	771848	770933	771372	771972
28	OUT CHAMBER	2	780119	780119	780119	780119	780119
29	SPRING WASHER	2	681855	681855	681855	681855	681855
33	VALVE BODY ASSY	1	804504	804504	804504	804504	804504
33-1	RESET BUTTON	1	706798	706798	706798	706798	706798
33-2	PLATE A	1	710587	710587	710587	710587	710587
33-3	SPOOL END COVER	1	771357	771357	771357	771357	771357
33-4	SPOOL CASE	1	710574	710574	710574	710574	710574
33-5	SPOOL ASSY	1	801404	801404	801404	801404	801404
33-6	SPOOL COVER	1	771356	771356	771356	771356	771356
33-7	PLATE B	1	710636	710636	710636	710636	710636
33-8	SPRING WASHER	4	681855	681855	681855	681855	681855
33-9	BOLT	4	682943	682943	682943	682943	682943
34	BOLT	2	682918	682918	682918	682918	682918
36	VALVE	1	686825	686825	686825	686825	686825
40	FLANGED NUT	4	682276	682276	682276	682276	682276
41	BOLT	4	611152	611152	611152	611152	611152
44	GASKET	1	771358	771358	771358	771358	771358
45	BOLT	12	621160	621160	621160	621160	621160
46	MUFFLER	1	681293	681293	681293	681293	681293